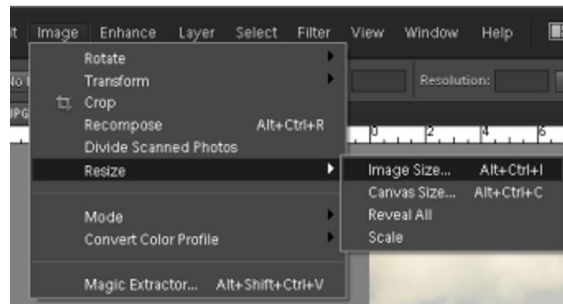
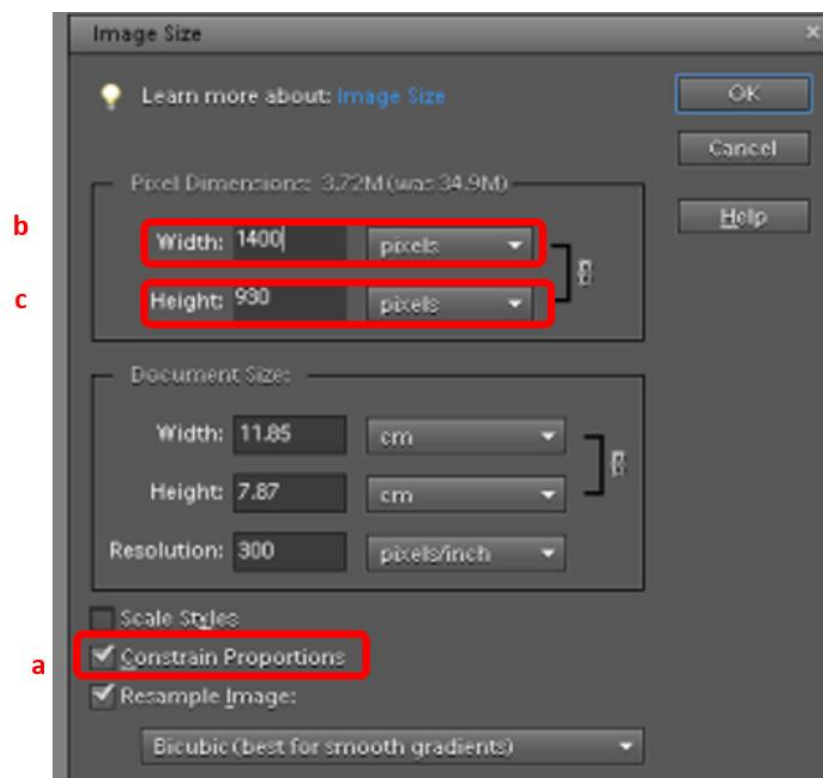


SAVING AN IMAGE USING PHOTOSHOP ELEMENTS

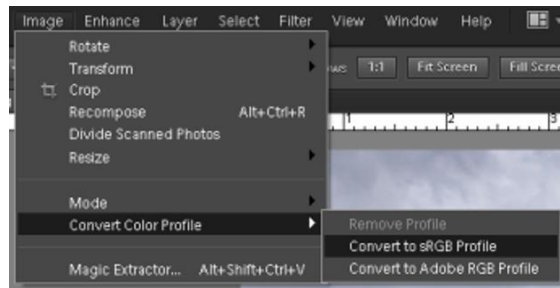
1. Open the **Image** menu, select **Resize** and then select **Image Size**.



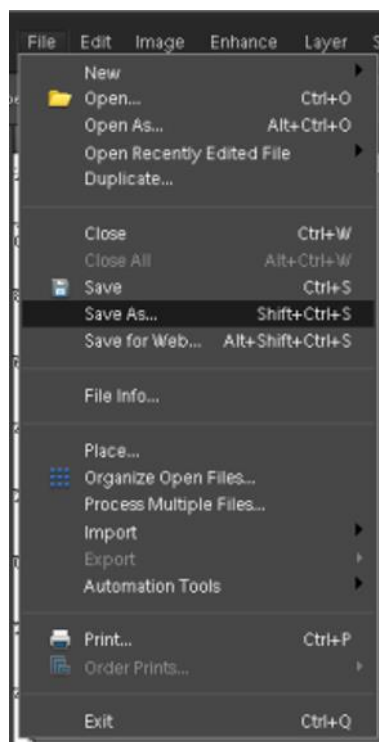
2. In the Image size dialog
 - a. Make sure you have got a tick next to **Constrain Proportions**.
 - b. Set the **Width** to **1920 pixels**.
 - c. If the Height shows more than more than **1080 pixels**, change this setting to **1080 pixels**. This change will reset the Width to less than 1920. This does not matter.



3. In the **Image** menu, select **Convert Color Profile** and then choose **Convert To sRGB Profile**. This embeds the sRGB colour profile in the image.



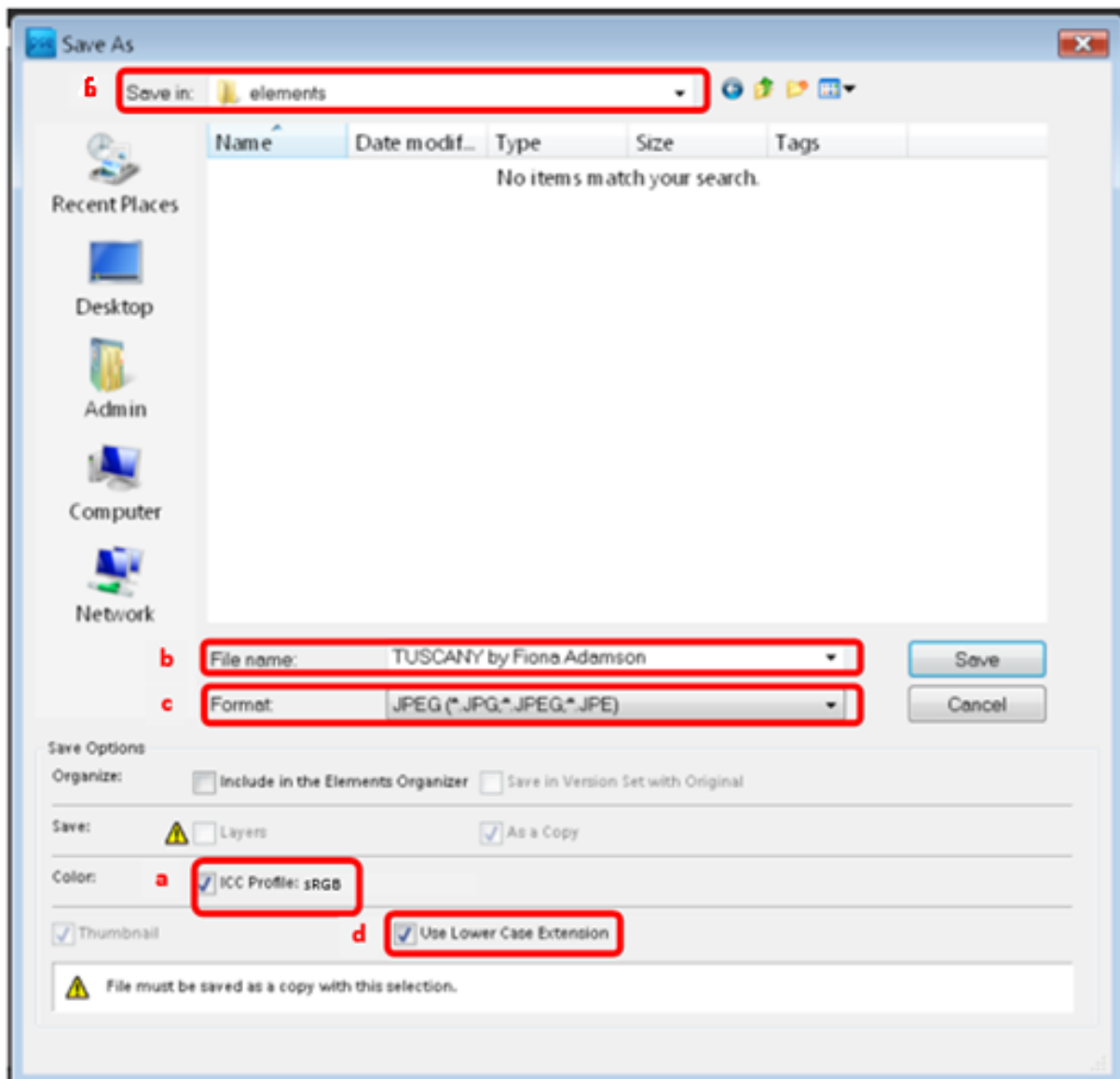
4. In the **File** menu, choose **Save As...**



5. In the **Save dialog** make sure you have:
 - a. Colour space: **sRGB**
 - b. The **File Name** as shown below
 - i. Title in CAPITALS
 - ii. by in lower case
 - iii. Your name with Capital Initials

Example: **THE SKY AT NIGHT by Patrick Moore**

- c. Format: **JPEG**
 - d. **Use Lower Case Extension** must be ticked.
6. When you have done all this, select where you want **Elements** to save the file and click **Save**.



7. When you have saved all the images you want, attach them to an email and send the email to: images@pottersbarphotosoc.org